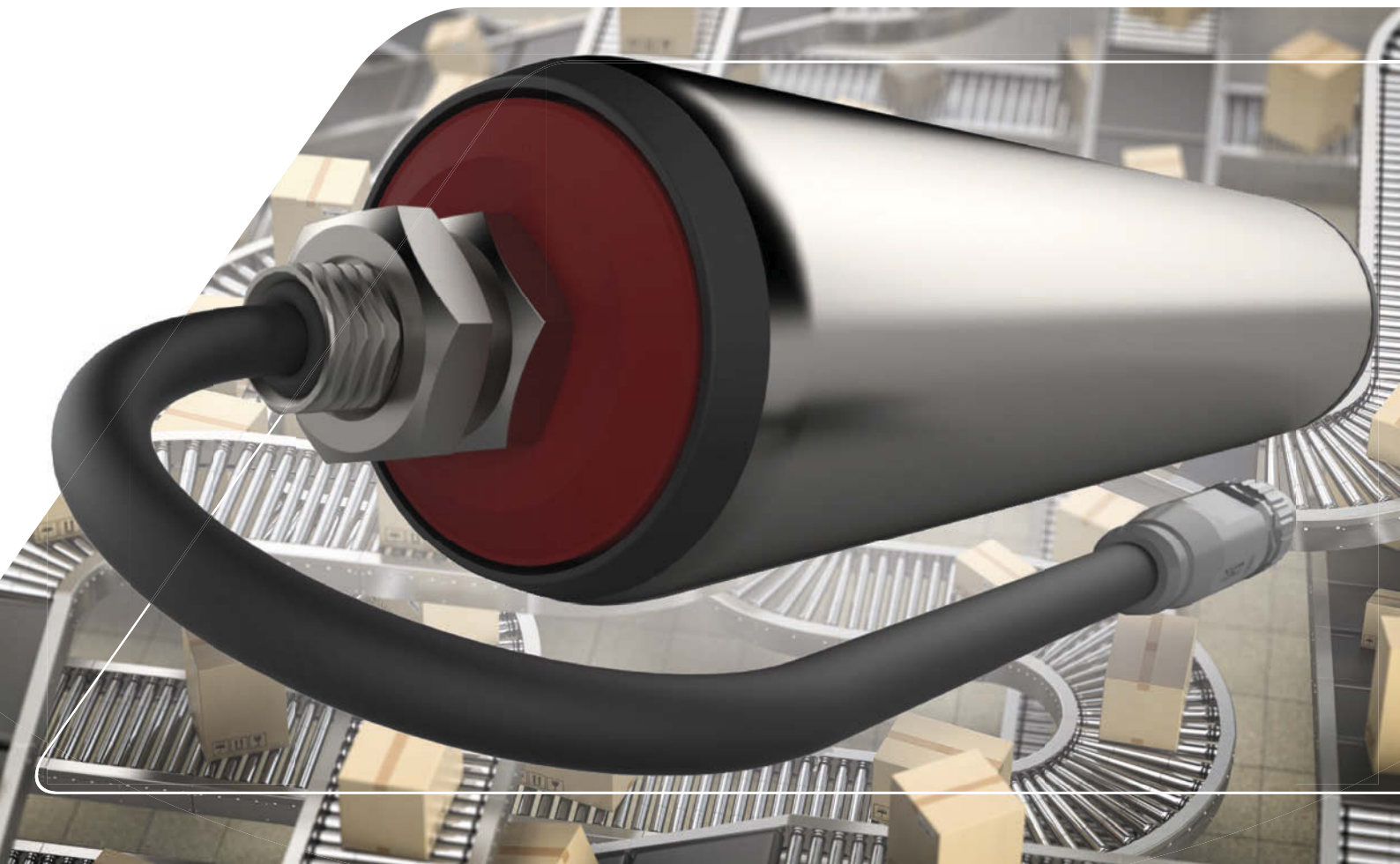


MTA
MOTORIZED
ROLLER
I/O

MTA
innovation is our drive

***Compatible with all
common industry
standards***



SIMPLE SYSTEM INTEGRATION

The Motorized Rollers from MTA with **integrated motor controller** offer the highest **compatibility with established industry standards**. This makes system integration very easy.

Through integration into the automation world of **Bihl+Wiedemann**, the leading provider of automation components with AS-Interface, accumulation routes for container conveyor technology can be equipped with **gearless motor rollers from MTA** very quickly and easily.

The simple connection technology reduces the **amount of wiring** to a **minimum** and drastically **reduces installation costs**.

In addition, more than 100 motor rollers can be efficiently connected with just one Ethernet node.



ASi motor modules

Motor modules with outputs for 2 or 4 gearless motorized rollers are available for control.



- High data width: 4, 8 or 16 bytes of process data
- Short cycle time of just 1.27 ms
- Cyclic writing of speeds and ramps
- Connection of up to 8 light sensors
- Voltage supply: 24 VDC and 48 VDC
- Integration of ZPA logic

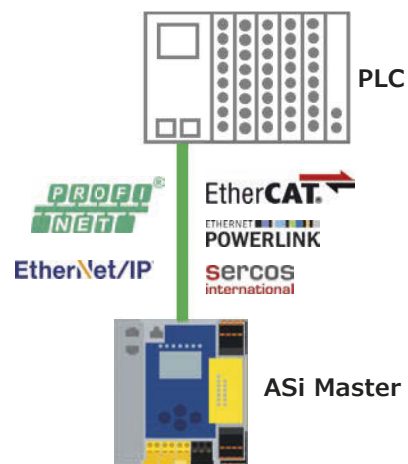


MTA Motorized Roller

Gearless, this motorized roller is **durable, quiet** and completely **maintenance and wear-free**. The energy-efficient drive system **reduces emissions, ensures sustainability** and **protects the environment**.

The application area is the precise transport of packages and containers on accumulation routes with a container weight of **up to 50 kg**. The individual adjustment of mechanical performance, clamping length, diameter and tube properties enables almost unlimited application possibilities in the area of stationary conveyor technology.

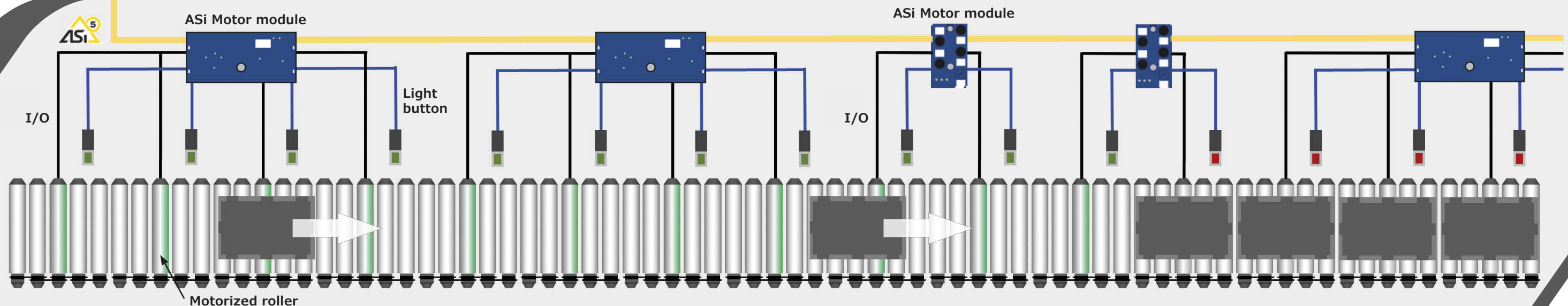
Power	23 W and 35 W
Motor controller	Integrated
I/O interface	1x analog input for speed 1x digital input for direction of rotation 1x digital output for errors
Power supply	24 VDC and 48 VDC
Speed	0 - 1 m/s



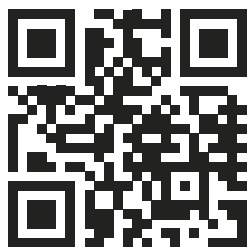
ZPA (zero pressure accumulation)

ZPA ensures clearly defined distances between the conveyed goods and prevents the containers from accidentally colliding. ZPA is also energy efficient because energy is only consumed when the material is actually being transported in the system.

- ZPA function integrated in the ASi master
- Pre-programmed (single inlet, single outlet, block outlet, sleep/awake mode,...) and also freely programmable
- The entire conveyor technology therefore functions autonomously and independently of the control system
- No programming or wiring to the PLC required
- Integration into the Bihl+Wiedemann Software Suite enables convenient planning, parameterisation and commissioning of the entire conveyor line including the ZPA functions.



This folder contains information about our products. Further details about properties and currently valid technical data are given in our offers and order confirmations. Subject to typographical and printing errors. Images and texts from this folder may not be used without our express written consent. Illustrations: MTA. Owner, editor and publisher: MTA GmbH, Westbahnstrasse 32, A-4482 Ennsdorf. Printed February 2024.






www.mta-innovation.com

MTA
innovation is our drive

Westbahnstraße 32
A-4482 Ennsdorf
Österreich

T +43 720 920 500
E office@mta-innovation.com
W www.mta-innovation.com

 www.facebook.com/MTAGmbH
 www.linkedin.com/company/mta-innovation
 www.instagram.com/mta_innovation

