

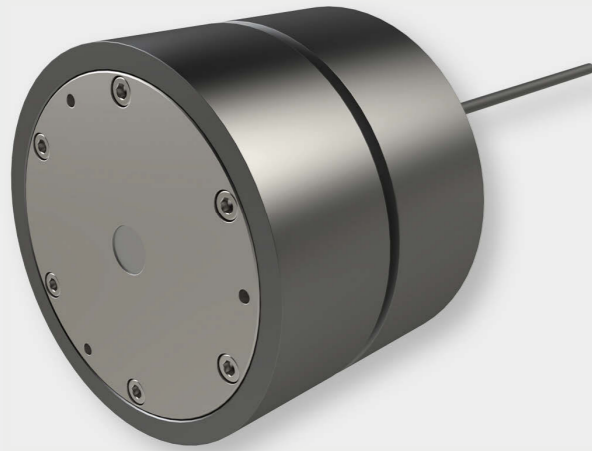
DRUM MOTORS BELT MODULE DRIVE

MTA
innovation is our drive

***Compact power package
for product separation***



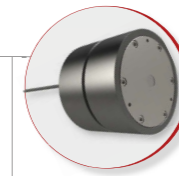
REVOLUTIONARY ACCELERATED: Innovative drive for highly dynamic movement processes



This gearless direct drive redefines innovation:

Integrated directly **into the pulley**, this groundbreaking solution eliminates all the disadvantages of conventional geared motors, which are usually flanged to a pulley.

The result? A compact, efficient drive unit without compromising performance. Groundbreaking technology that takes efficiency and reliability to a new level.

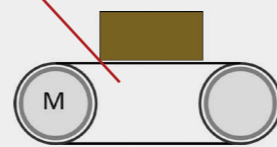
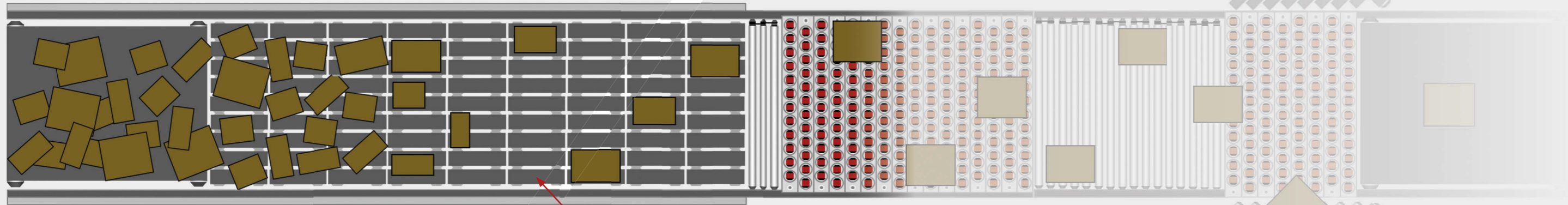


Belt module drive		
Voltage	VDC	48
Speed	m/s	4.4
Nominal torque	Nm	8
Maximum torque	Nm	32
Housing diameter	mm	149
Length	mm	119
Encoder / Feedback		Magn. encoder
Ambient temperature	°C	0 ... 65

The impressive technical data of our drive system impresses with highest performance, excellent efficiency and a robust design that meets the requirements of demanding applications.

Application

Our drive is **ideal for use** in conveyor modules for **product separation**.



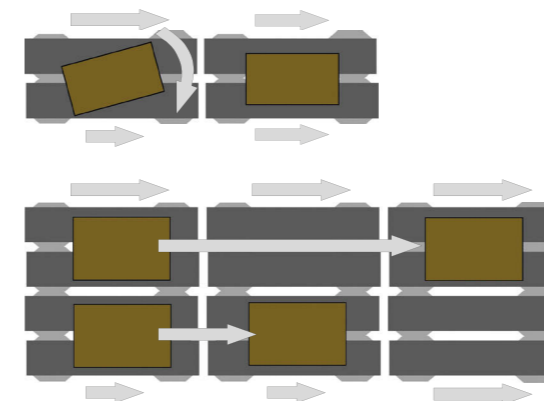
Belt module drive Deflection disc

Specially developed for the **highly dynamic** package processing of chaotic package flows, this belt module drive offers **custom** solutions for separation systems and the **precise** alignment of packages. An innovation that redefines efficiency and speed for modern logistics.

Properties

- **Compactness:** As no external gearbox is required, the size of the overall system is significantly reduced. This enables space-saving integration.
- **Efficiency:** The direct drive eliminates the energy loss normally caused by the gearbox. This leads to higher overall efficiency of the drive system.
- **Low maintenance:** Traditional geared motors require regular maintenance, especially of the gearbox. The gearless direct drive reduces the number of moving parts. No maintenance is required.
- **Noise reduction:** Geared motors produce noise due to friction and wear. The gearless direct drive eliminates vibrations and noise, resulting in reduced noise emissions.
- **Faster response times:** By integrating the motor directly into the pulley, the gearless direct drive enables faster transmission of torque and improved response time.
- **Precision:** The direct connection between motor and pulley enables precise control and positioning.

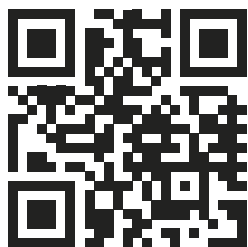
Functions



Alignment:
Rotated packages are aligned using highly dynamic acceleration processes.

Separation:
Package items arranged next to each other are separated for subsequent logistics. By means of accelerating processes, packages arranged in parallel are arranged one behind the other.

This folder contains information about our products. Further details about properties and currently valid technical data are given in our offers and order confirmations. Subject to typographical and printing errors. Images and texts from this folder may not be used without our express written consent. Illustrations: MTA. Owner, editor and publisher: MTA GmbH, Westbahnstrasse 32, A-4482 Ennsdorf. Printed October 2024.






www.mta-innovation.com

MTA
innovation is our drive

Westbahnstraße 32
A-4482 Ennsdorf
Österreich

T +43 720 920 500
E office@mta-innovation.com
W www.mta-innovation.com

 www.facebook.com/MTAGmbH
 www.linkedin.com/company/mta-innovation
 www.instagram.com/mta_innovation