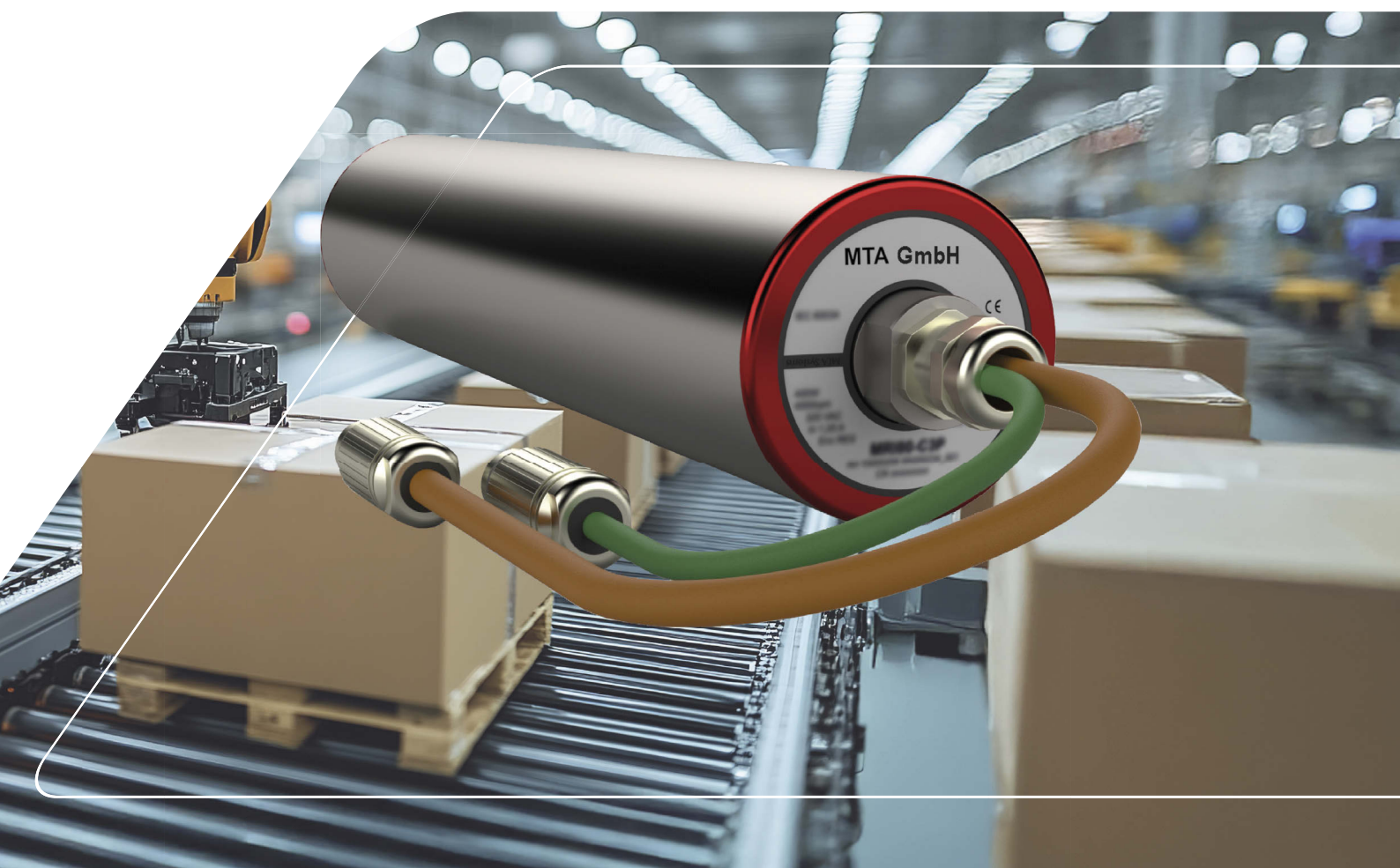


**MOTORIZED  
ROLLER  
48 VDC**

**MTA**  
*innovation is our drive*

**Heavy-duty drive  
for pallet conveyor  
technology**



# 48 VDC MOTORIZED ROLLERS by MTA

represent the next generation of pallet conveyor technology in intralogistics

MTA Motorized Rollers have been specifically designed for **maximum efficiency** and **reliability**. With impressive motor power capable of handling pallet weights of up to **1,500 kg**, our Motorized Rollers effortlessly manage even the most demanding transportation tasks.

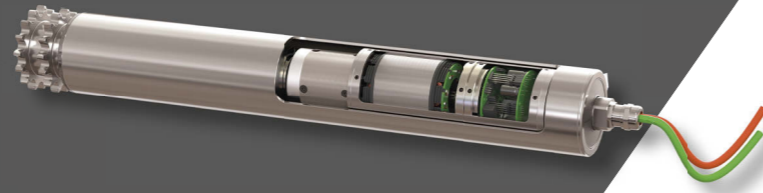
With our innovative technology, we replace conventional 400V drive technology, offering a compact and powerful drive component that sets new standards.

Thanks to the **integrated design**, installation is significantly simplified, while at the same time **reducing space requirements** and **minimizing maintenance effort**.

Benefit from flexible communication interfaces that seamlessly integrate into your systems. Both **digital and analog inputs and outputs** are available for communication.

Additionally, integration into the system network via **CANopen** is straightforward. This ensures optimal networking and communication within your automation environment.

The application possibilities of our drives are extremely diverse and offer solutions for numerous applications. However, our primary focus is on stationary pallet conveyor technology, where we set benchmarks in efficiency and robustness to optimize your logistics processes and maximize availability.



## Areas of application

### Stationary pallet conveyor technology

- Pallet conveyor line technology
- Transfer unit
- Stopping and aligning pallets
- Chain conveyors
- Lifting stations
- Rotating stations

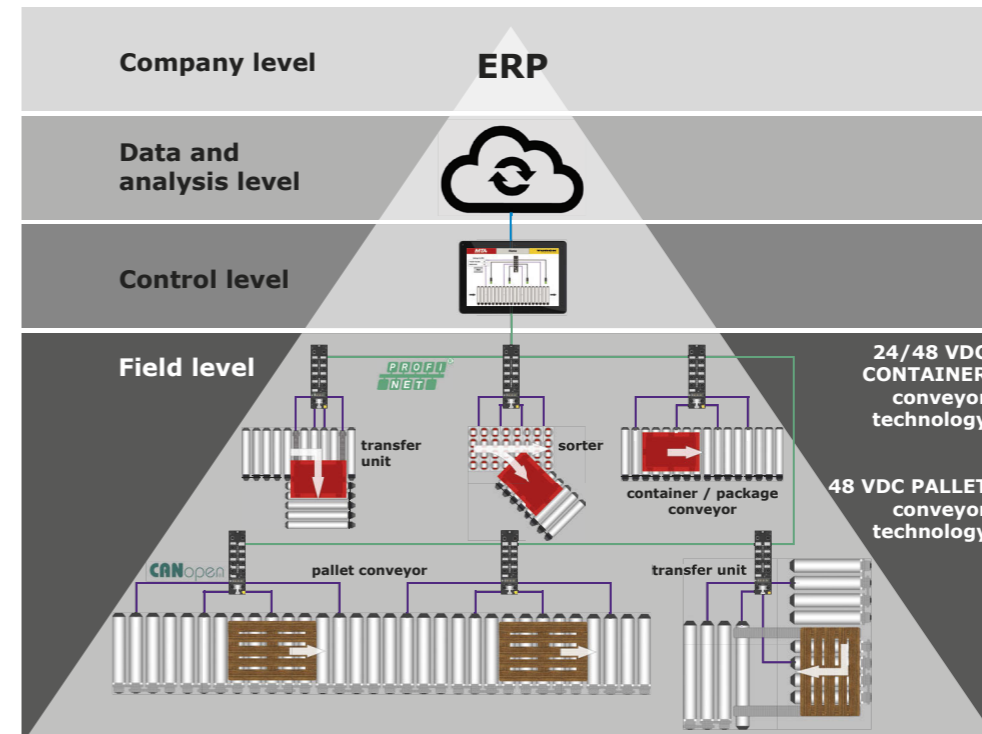
### Mobile Robotic

- Roller conveyor on load handling device

### Stationary container and package conveyor technology

- Belt conveyors
- Cross belts at crossbeltsorters

## Full digitalization



### Maximum efficiency through seamless integration!

Our system components integrate effortlessly into the automation environment of your intralogistics center... thanks to standardized interfaces.

### 100% digitalization down to the actuator level!

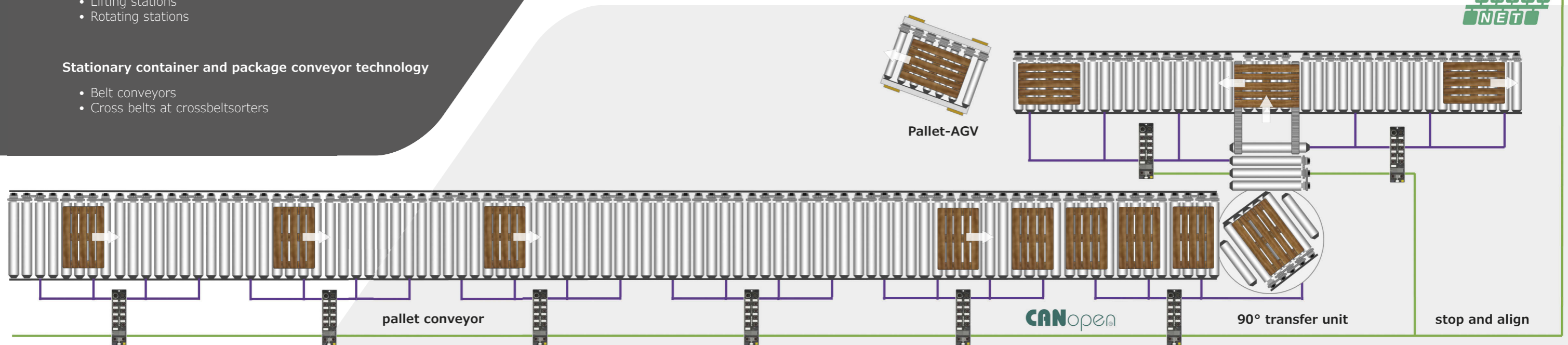
Our continuous fieldbus technology enables seamless digital communication at all levels, ensuring you always have a complete overview.

### Transparency and control in real-time!

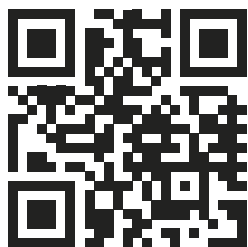
Process, service, and diagnostic data are forwarded to the top enterprise level, providing maximum efficiency and enabling fast decision-making.

## Technical data

Weight	up to 1,500 kg
Speed	up to 0.5 m/s
Power supply	48 VDC
Power	up to 400 W
Nominal torque	up to 40 Nm
Maximum torque	up to 125 Nm
Interfaces	I/O and CANopen
Diameter	80 and 89 mm
Optional	with integrated holding brake



This folder contains information about our products. Subject to technical modifications. Further details about properties and currently valid technical data are given in our offers and order confirmations. Subject to typographical and printing errors. Images and texts from this folder may not be used without our express written consent. Illustrations: MTA, Adobe Stock. Owner, editor and publisher: MTA GmbH, Westbahnstrasse 32, A-4482 Ennsdorf. Printed February 2025.



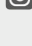


**[www.mta-innovation.com](http://www.mta-innovation.com)**

**MTA**  
*innovation is our drive*

Westbahnstraße 32  
A-4482 Ennsdorf  
Österreich

T +43 720 920 500  
E [office@mta-innovation.com](mailto:office@mta-innovation.com)  
W [www.mta-innovation.com](http://www.mta-innovation.com)

 [www.facebook.com/MTAGmbH](https://www.facebook.com/MTAGmbH)  
 [www.linkedin.com/company/mta-innovation](https://www.linkedin.com/company/mta-innovation)  
 [www.instagram.com/mta\\_innovation](https://www.instagram.com/mta_innovation)